

Southampton & Eastleigh Schools **MUSIC MAPPING**



SOCO MUSIC PROJECT

SURVEY RESULTS

SoCo Music Project have carried out a mapping exercise of the Secondary Schools in Southampton, their primary music contacts, and departmental resources and facilities. By developing relationships with schools, identifying gaps and addressing need, we aim to further support music-making opportunities for their students, ensuring that they have a diverse music education.

SCHOOLS/SETTINGS THAT PARTICIPATED IN THE SURVEY:

- Redbridge Community School
- Woodlands Community College
- St Mary's College
- Regents Park School
- Oasis Academy Lord's Hill
- Compass School
- Bitterne Park School

What music activities are currently taking place outside of your curriculum?

Singing



Instrument Ensemble



Percussion



Music Technology e.g. iPads



Tuition



Listening to Recorded Music/Re..



Songwriting



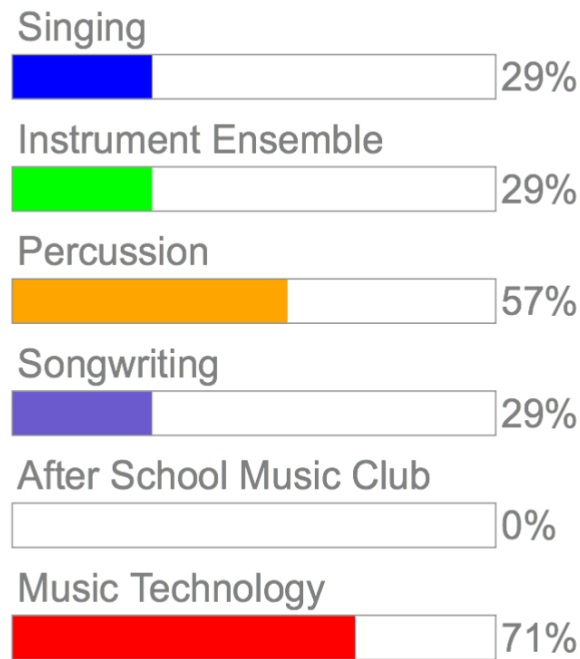
Music Clubs



Comments:

- Steel pans
- Open department at lunchtimes for drop in musical work
- Music clubs involve band, KS4 revision and catch up, and rehearsals for performances
- Student led rock/pop band rehearsals
- Drum teacher
- Junior Choir, Senior choir, Folk Band, Wind Band, Jazz Band, Samba Band, String Group, Music Theory Club, 6th Form Band, Ukulele Band

What music activities would you like to offer in your setting?



What skills are within your staff team?



Comments:

- Piano, flute, curriculum music, guitar, singing, music tech, violin, music technician, studio, bass, guitar

- I am a violin player by training but also play guitar/ bass, drums and sing confidently (I am the only teacher!)

- Trumpet (brass) piano and basic guitar

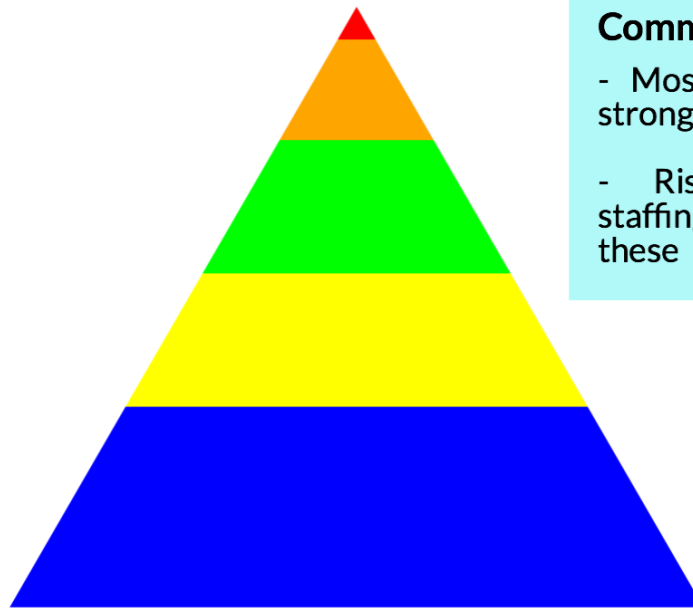
- Piano

- Piano, Sax, Violin, Cello, Voice

■ PC ■ Mac ■ DAWs (Cubase/Logic Pro/Pro .. ■ Arranging Software (Sibeliu.. ■ Instruments

SOCO MUSIC PROJECT

What kind of events has your setting offered to students in the past?

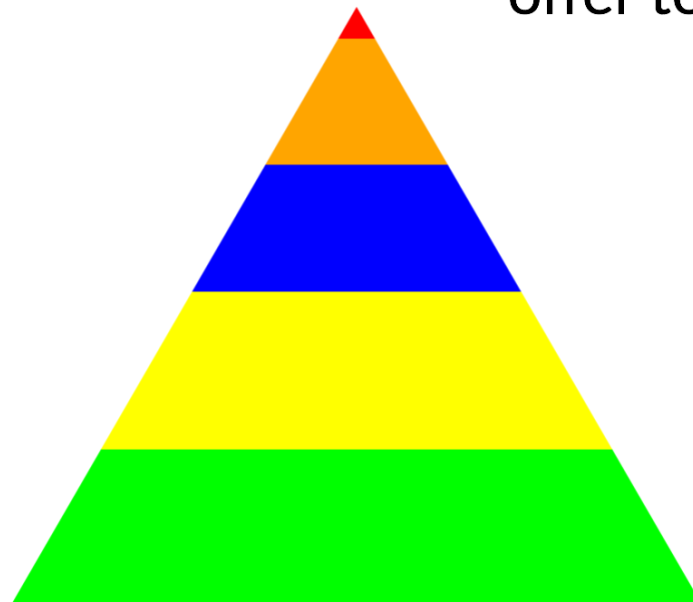


Comments:

- Mostly with drama so a strong bias towards musicals
- Risk assessment and staffing makes it hard to offer these

■ Trips (33%) ■ Watch Live Music Events (22%) ■ Gigs (22%) ■ Tours (17%)
■ Festivals (5%)

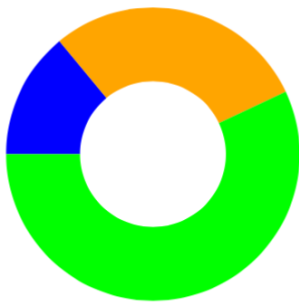
What kind of events would your setting like to offer to students?



■ Gigs (26%) ■ Watch Live Music Events (26%) ■ Trips (21%) ■ Tours (21%)
■ Festivals (5%)



What facilities/space/equipment do you have?



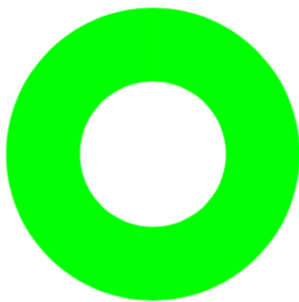
■ Don't have (14%) ■ Have but don't use (0%)
■ Use occasionally (29%) ■ Use regularly (57%)

COMPUTERS WITH MUSIC
MAKING SOFTWARE



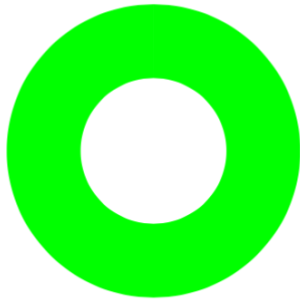
■ Don't have (57%) ■ Have but don't use (0%)
■ Use occasionally (29%) ■ Use regularly (14%)

IPADS



■ Don't have (0%) ■ Have but don't use (0%)
■ Use occasionally (0%) ■ Use regularly (100%)

INSTRUMENTS



■ Don't have (0%) ■ Have but don't use (0%)
■ Use occasionally (0%) ■ Use regularly (100%)

DEDICATED MUSIC
MAKING SPACE



■ Don't have (29%) ■ Have but don't use (0%)
■ Use occasionally (29%) ■ Use regularly (43%)

PERFORMANCE SPACE



■ Don't have (29%) ■ Have but don't use (0%)
■ Use occasionally (29%) ■ Use regularly (43%)

RECORDING EQUIPMENT

What facilities/space/equipment do you have?



■ Don't have (0%) ■ Have but don't use (0%)
■ Use occasionally (0%) ■ Use regularly (100%)

REHEARSAL/PRACTICE
SPACE



■ Don't have (57%) ■ Have but don't use (0%)
■ Use occasionally (14%) ■ Use regularly (29%)

STUDIO SPACE

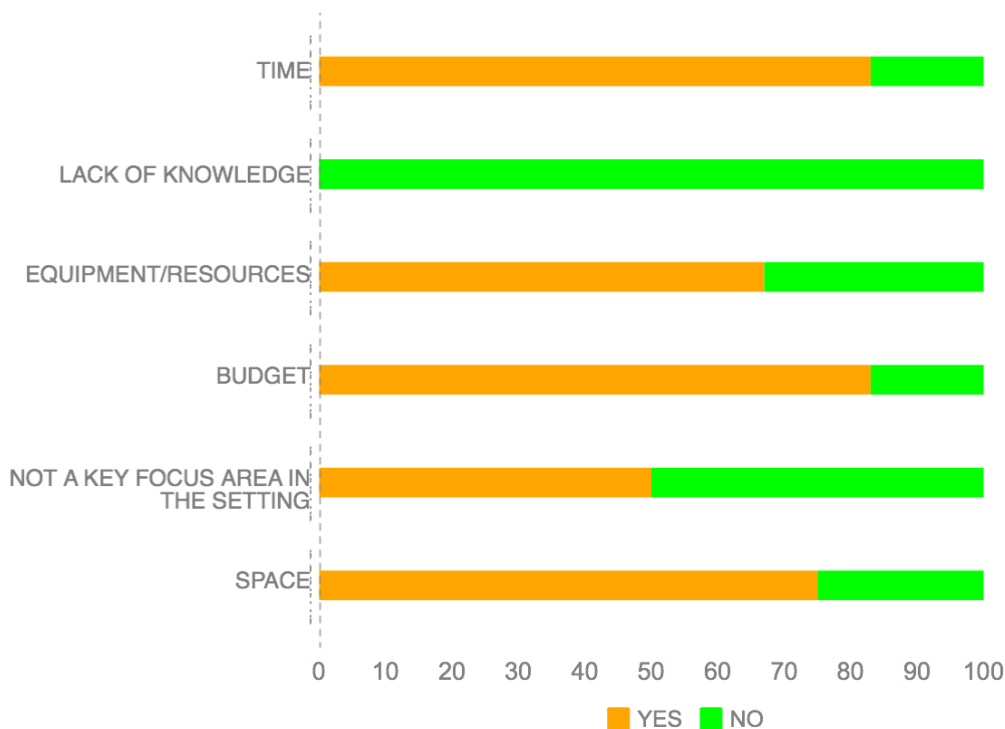
Comments:

- We only have one practice room which is always used but it is not enough!
- We have Cubase but our computers are so old they struggle! Also new larger class sizes make music ICT hard to deliver effectively.
- Fully functional theatre with reclining seating, lighting rig and sound desk

What aspirations do you and your department have for the students at your setting?

- For all students to enjoy making music and achieve
- I would like all students to experience the power and beauty of music and be able to carry the benefits into their futures.
- Choir competitions, percussion groups, external coaches/teachers running courses. More equipment!!!
- Grow the musical ensemble and eventually be performing on regular occasions both in and out of school
- Pop choir
- Rock School music practitioners is offered to years 10 and 11, I usually have a good uptake but as I have majority of my teaching not in music now expanding is difficult to imagine.
- Expand our numbers in each ensemble and to continue to be able to stage musicals and go on tour.

What are the main challenges/barriers that you face in providing music activities in your setting?



Comments:

- Student long-term commitment to regular after school or lunch time activity.

- I have only 7 hours a week of music teaching time as its not a priority at Compass

What training would you be interested in to support you to deliver more music activities?

| | YES | MAYBE | NO |
|--|-----|-------|-----|
| MUSIC TECHNOLOGY (IPADS, APPS, GARAGEBAND ETC) | 80% | 20% | 0% |
| HOW TO USE MUSIC ACROSS THE CURRICULUM | 40% | 40% | 20% |
| HOW TO PLAN, STRUCTURE & LEAD MUSIC SESSIONS | 67% | 17% | 17% |
| SINGING | 50% | 33% | 17% |
| CREATIVE ENSEMBLE CO-COMPOSING & IMPROVISING | 33% | 67% | 0% |
| PERCUSSION | 86% | 14% | 0% |